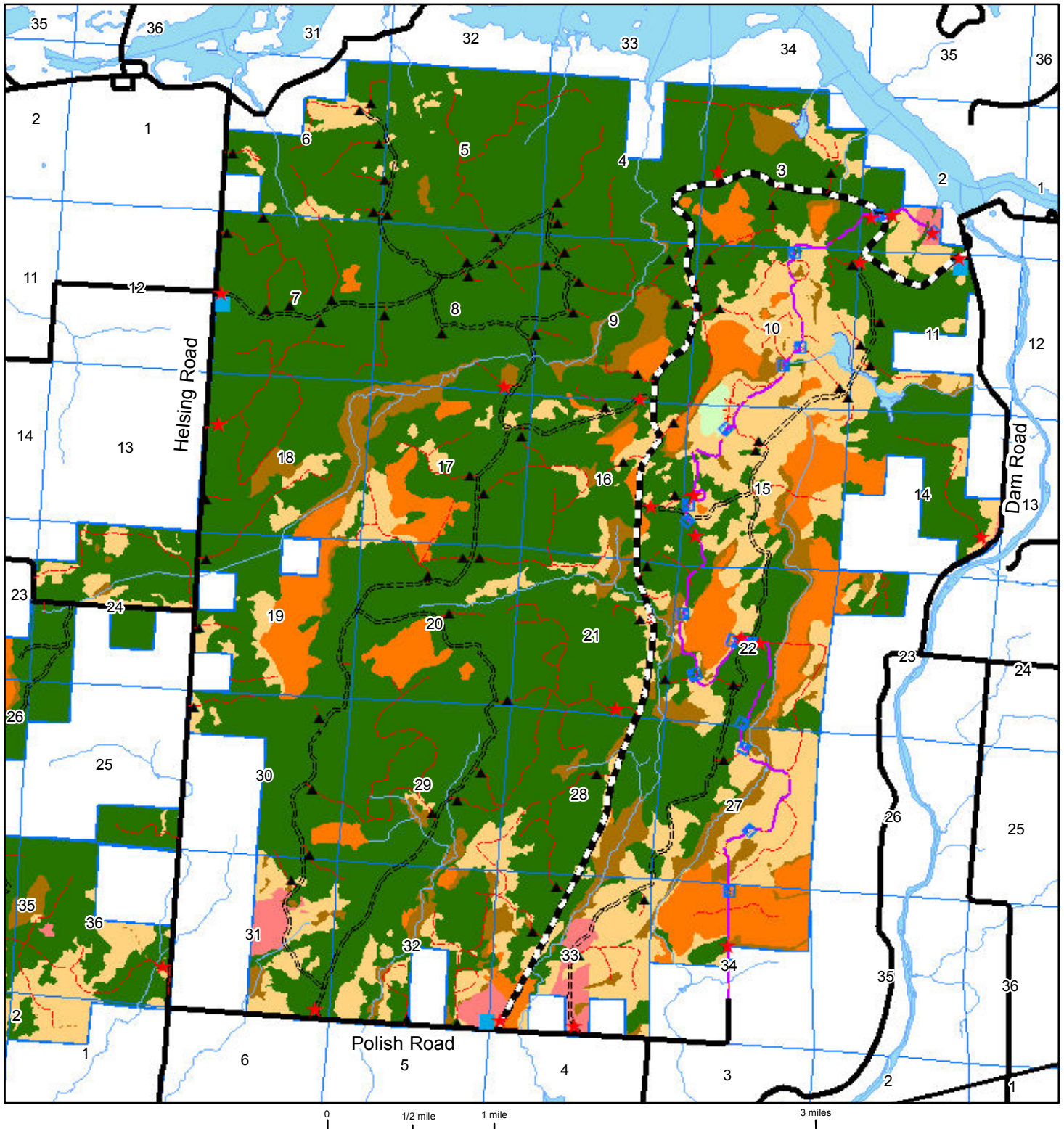

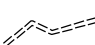
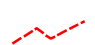



Wisconsin Northern Highlands NMTC Property  
 Chippewa Flowage Working Forest Conservation Easement  
 Ownership Boundary / Access Points / Routes





 - Access Easement Road. This road will be open from Memorial weekend to December 15 or when snow prevents use. It may be closed for maintenance, timber harvest or extreme wet events.

 - Main Roads have a good base and may serve as vehicular access points when gates are unlocked (weather dependent). All Roads are closed to ATV, ORV, Side by Side use.

 - Secondary Roads may or may not have a good base and may be gated, bermed or simply posted closed to vehicular traffic. These roads are closed to all motorized vehicular traffic. Foot and bicycle traffic welcome.

 - Designated Snowmobile Trail. Foot and bicycle traffic welcome.

 - Gates. Access Points, points along public or interior private roads where trails may be used for highway licensed vehicular use by the public when gates are open.

 - Berms (rocks, tank traps, dirt piles) signifying road closed to vehicular traffic.

 - Sign Post (location of Map and further information).

 - Hardwoods  - Aspen  - Red Pine  - Swamp Conifer  - Non-Timber