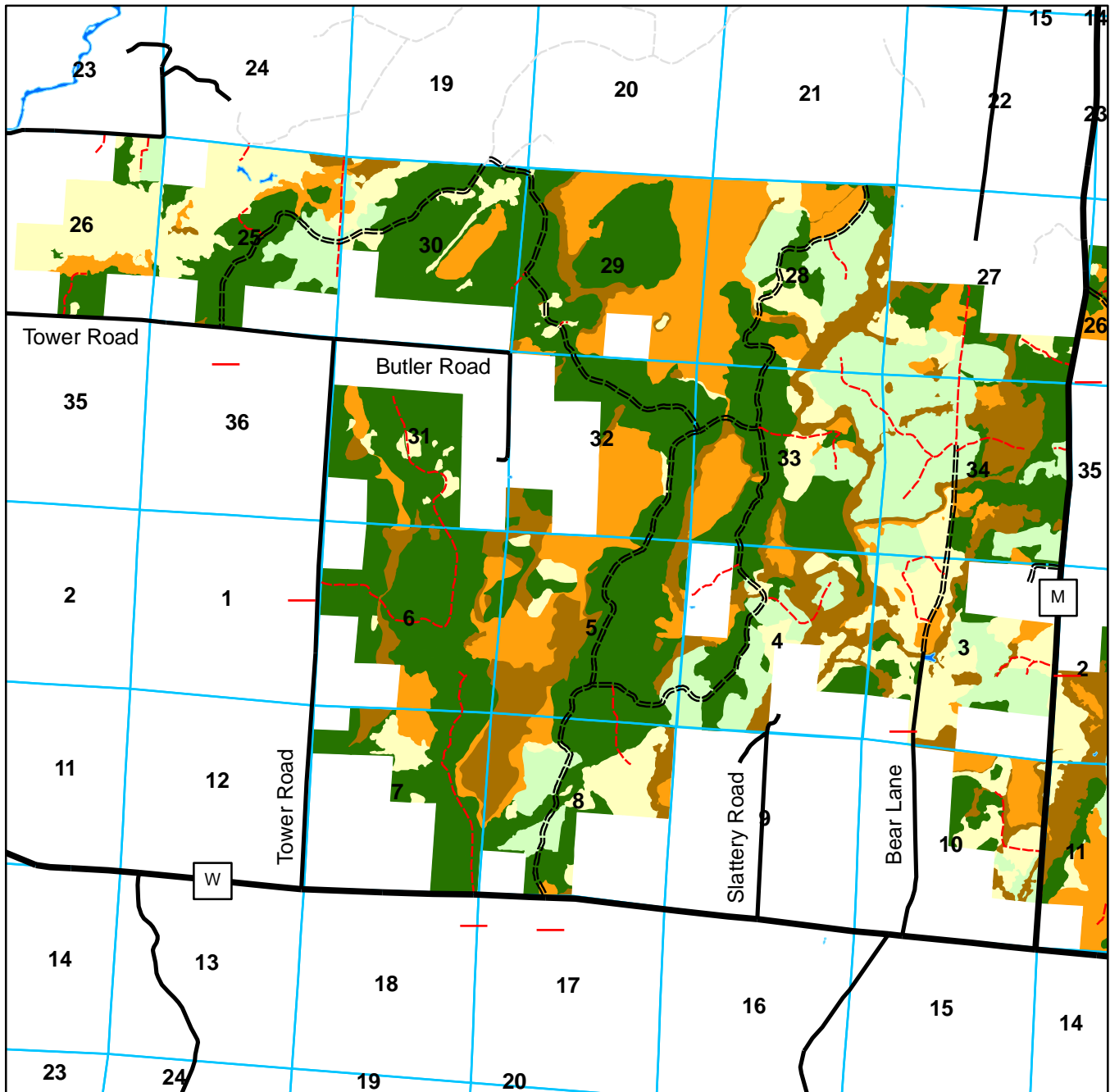
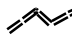
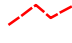



**Great Lakes NMTC Forestlands, LLC. Ownership Map of Loretta Compartment (West).  
Cover Groups, Access Points and Roads. T39N R5W and T38N R4W, Winter, and  
T39N R4W, Draper, Wisconsin. 9/1/2010.**




 - Access Points, points along public roads where trails may be used for public access.


 - Main Roads have a good base and may serve as vehicular access points when gates are unlocked (weather dependent).

 - Secondary Roads may or may not have good base and may be gated, bermed or simply posted closed to vehicular traffic.

 - Hardwood Cover Group (Maple, Basswood, Ash, Oak, Birch).

 - Aspen Cover Group (Aspen dominated with Spruce, Fir, Pine, Hardwood secondary).

 - Plantation Cover Group (Red Pine, White Spruce, Tamarack).

 - Lowland Conifer Cover Group (Spruce, Cedar and Tamarack stands with other species secondary).

 - Non-Timber Cover Group (tag alder, open marsh, water dominated sites).