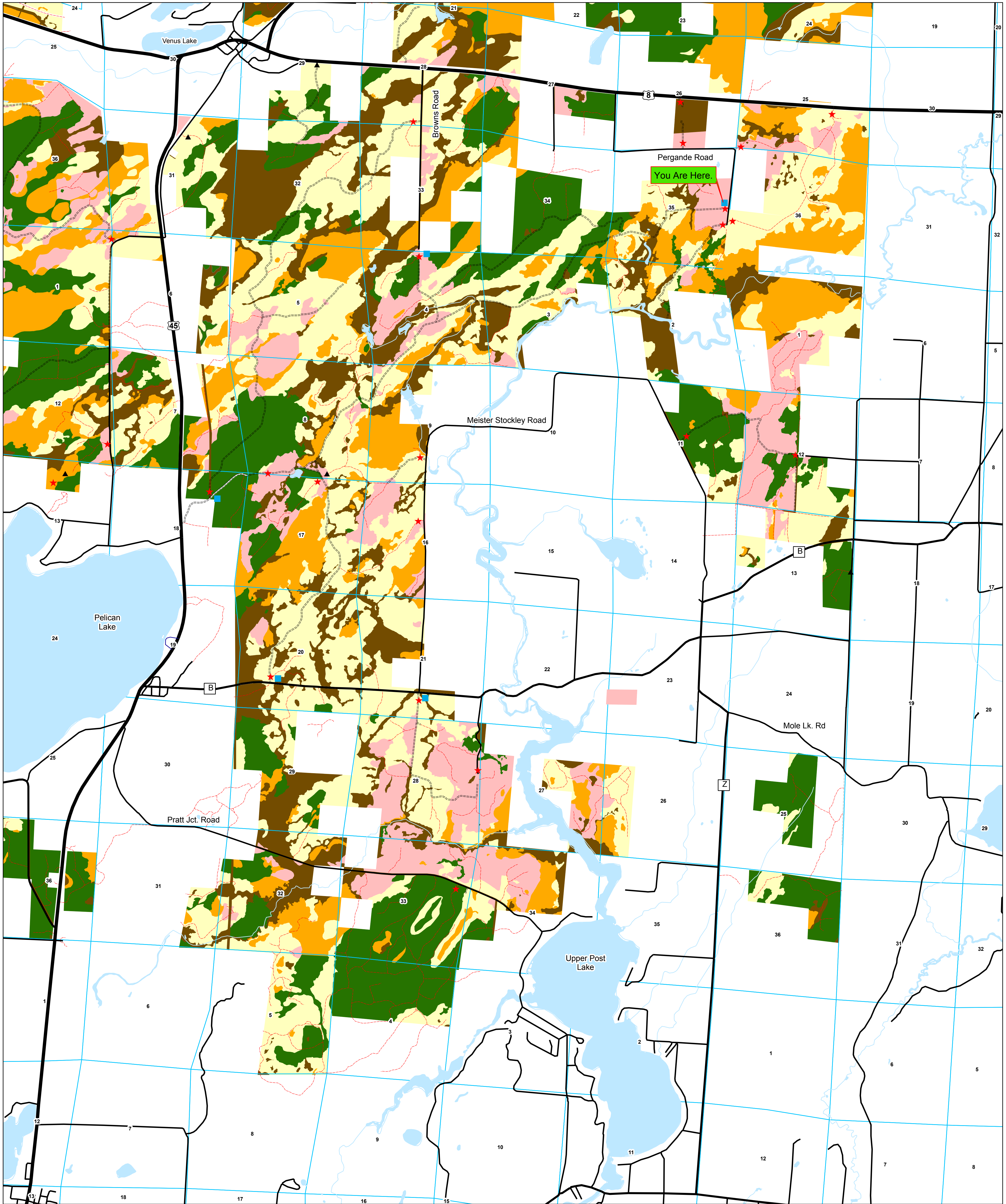


**Heartwood Forestland Fund VI, LLC. Ownership Map of Jennings Compartment.  
Cover Groups, Access Points and Roads. T36N R11E & T35N R11E, Monico & Schoepke, Wisconsin. 08/25/2017.**



0 1 2 miles

- ★ - Access Points, points along public roads where trails may be used for public access.
- ▲ - Berms (rocks, tank traps, dirt piles) signifying road closed to vehicular traffic.
- - Sign Post (location of Map and further information).
- - Main Roads have a good base and may serve as vehicular access points when gates are unlocked (weather dependent).
- - - Secondary Roads may or may not have good base and may be gated, bermed or simply posted closed to vehicular traffic. These roads are closed to all motorized vehicular traffic.

- - Hardwood Cover Group (Maple, Basswood, Ash, Oak, Birch).
- - Aspen Cover Group (Aspen dominated with Spruce, Fir, Pine, Hardwood secondary).
- - Plantation Cover Group (Red Pine, White Spruce, Tamarack).
- - Lowland Conifer Cover Group (Spruce, Cedar and Tamarack stands with other species secondary).
- - Non-Timber Cover Group (tag alder, open marsh, water dominated sites, gravel pits and utility lines).