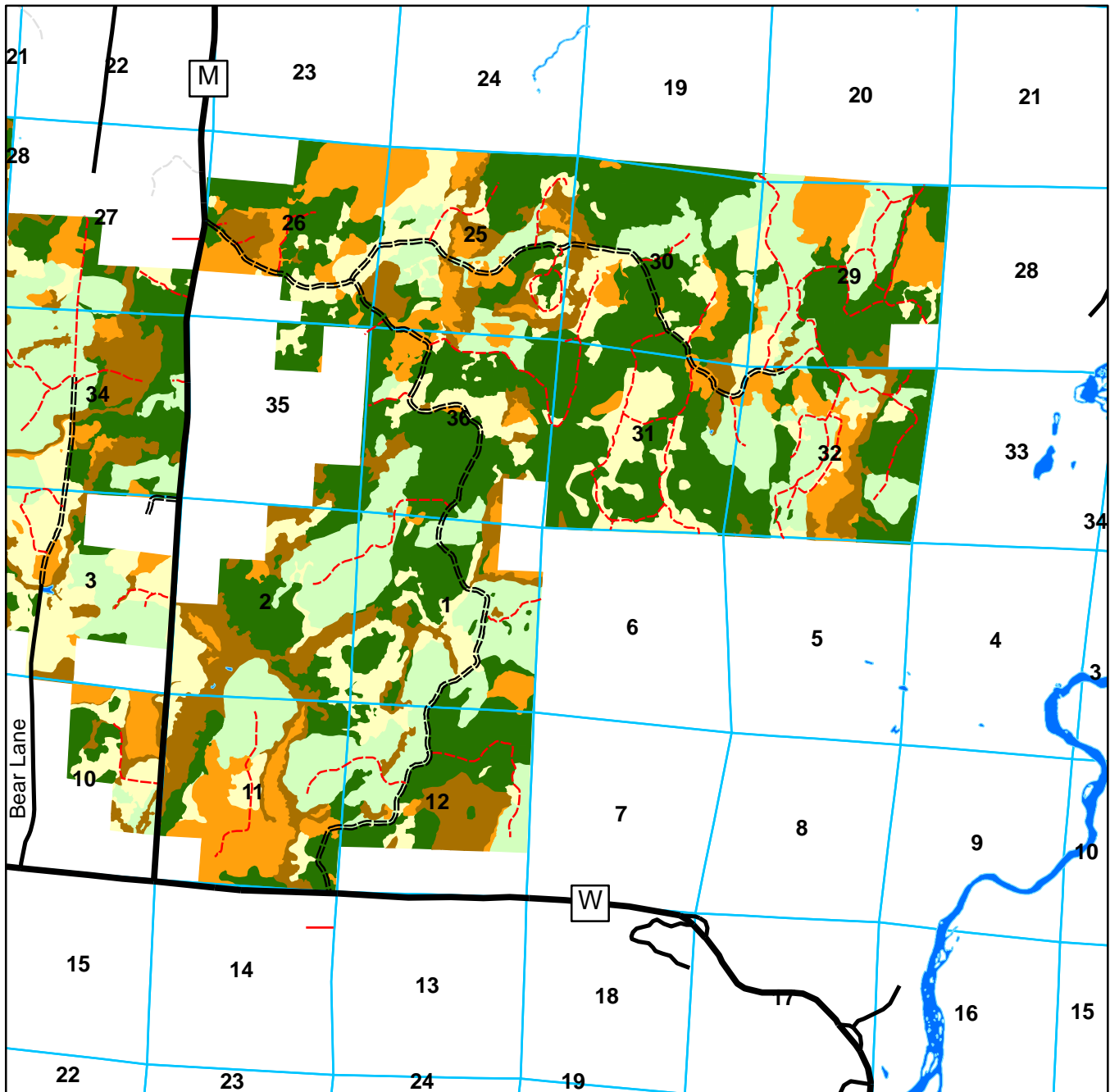

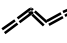
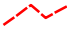







**Great Lakes NMTC Forestlands, LLC. Ownership Map of Loretta Compartment (East).  
Cover Groups, Access Points and Roads. T39N R4W and T39N R3W, Draper, and  
T38N R4W, Winter, Wisconsin. 9/1/2010.**



-  - Access Points, points along public roads where trails may be used for public access.
-  - Main Roads have a good base and may serve as vehicular access points when gates are unlocked (weather dependent).
-  - Secondary Roads may or may not have good base and may be gated, bermed or simply posted closed to vehicular traffic.
-  - Hardwood Cover Group (Maple, Basswood, Ash, Oak, Birch).
-  - Aspen Cover Group (Aspen dominated with Spruce, Fir, Pine, Hardwood secondary).
-  - Plantation Cover Group (Red Pine, White Spruce, Tamarack).
-  - Lowland Conifer Cover Group (Spruce, Cedar and Tamarack stands with other species secondary).
-  - Non-Timber Cover Group (tag alder, open marsh, water dominated sites).